

LIVERPOOL CITY REGION
CREW

LIVERPOOL

FILM

OFFICE

We Bring More to Your Story

YOU'RE ONE OF US HERE.

Liverpool is famous for its welcome.

Whether that's sharing our favourite independent restaurants, shops and pubs, the connectivity and walkability of our European-feeling city or how we adopt new people and ideas. It's about sharing the best of who we are, and inviting you to be a part of it.

No matter if you're an old friend or a new face - while you're here, you're one of us.





WORLDS ARE FOUND HERE.

**We're a powerful backdrop
for the world's stories.**

Come here to be Liverpool (of course) or, London, New York, Moscow, or Madrid in the past, present or even future. With our dramatic docklands, forests, beaches and 1,000 years of history, our city region is coveted for its versatile, accessible settings.

THINGS GET DONE HERE.

Not only do we inspire productions, we support them.

In us you'll find a responsive and resourceful partner who just gets what it takes to make a production a success. We know our stuff and can deal with all sorts of production demands. Like the time we shut down a Mersey tunnel for an evening. Easy.





HEROES ARE MADE HERE.*

**You create the stories, we
create the opportunities to
tell them.**

Let us connect you to exactly
the right funding, locations,
expert crew and local
partners across the city
region. Productions of all
shapes and sizes come here
for a world class experience.

TALENT FLOURISHES HERE.

We've invested in BAFTA-winning productions, and are nurturing a wealth of talent, both on screen and behind the camera.

Regional crew, local agencies, industry-led training and development opportunities and a connected northern talent belt means our diverse and highly skilled workforce are the future of our industry.



MADE IN LIVERPOOL



I CAN SEE YOU - TAYLOR SWIFT



THE BATMAN



PEAKY BLINDERS



FANTASTIC BEAST



THE TOWER



THE RESPONDER



HELP



FUNNY WOMAN

LIVERPOOL IS LIVELY.

- Condé Nast Traveller's Friendliest UK City & 3rd Best UK City
- Michelin awarded restaurants
- UNESCO City of Music
- ESPN's Greatest UK Sporting City
- More museums & galleries than any other UK city outside London
- Spoilt for choice shopping
- City-centre bustle to idyllic coast or countryside within 15 minutes



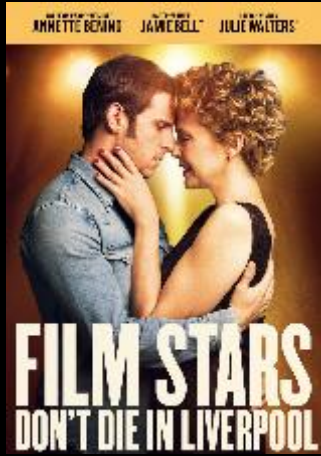
LIVERPOOL IS CONNECTED.

A port city situated in the centre of the UK with national & regional rail network and two major international airports within 45 mins of the centre.



EXECUTIVE LOUNGE

CREDIT ROLL.



Barbara Broccoli, Producer

"It's such a great place, Liverpool. The people were very welcoming. We understood how Gloria could have fallen for it."



David Heyman, Producer

"It was blinding. It couldn't have been better. St George's Hall and the Cunard Building gave us exactly what we wanted. And the people there, the city itself was so supportive, and the film office was incredible. It was a great experience."



Sarada Mcdermott, Producer

"Liverpool was perfect location to film our production. St George's Hall provided us with the shots we needed, and the space allowed us to create a brand new set. The team at the Film Office were fantastic and I'd have no hesitation in returning to the city again to film."



Richard Curtis, Writer & EP

"I'm having an absolute magnificent time. I will in future always set all of my films in Liverpool. We're going to Penny Lane, Strawberry Fields and Eleanor Rigby's grave, and we've been given blissful access to those incredibly iconic places."

EXECUTIVE LOUNGE

CREDIT ROLL.



**Alison Jackson,
Executive Producer**

"Filming in Liverpool has been a fantastic experience, the location has been pivotal. Liverpool City Region provided us with a wealth of cinematic locations, and the support we received from Liverpool Film Office and the people of this city has been instrumental."



Betsan Morris Evans, Producer

"Filming in Liverpool is a great experience. The city has a wealth of fantastic, versatile locations – both interior and exterior. The film office have supported our production fully, nothing is too much trouble and they have impressed me with their amazing can do attitude. I would come back here every time if I could."



Tom Sherry, Executive Producer

"The LCR Production Fund's contribution was essential. Without that funding, we wouldn't have been able to make Time, and for that we're all enormously grateful to the city, for having the foresight to realise that, sometimes to create something, you have to support it."



Beth Willis, Executive Producer

"The LCR Production Fund made everything possible for Help. The planning time for such a time specific show (set at the start of the Covid pandemic in March 2020), during the second lockdown was extremely tight – and Liverpool Film Office had our backs from the start. They supported the vision and the talent to make the show possible – and opened the doors of Liverpool to us with open arms."

GREEN ROOM



Samuel L Jackson

“Liverpool is a great place. The people are so cool, so supportive and so helpful, and the city is so much fun.”



Tim Roth

“My guilty pleasure is Liverpool. I went there recently and loved it. The people were incredible. One day we were out on Crosby beach where there are Antony Gormley’s ‘Another Place’ sculptures. It was so beautiful, and it revitalised my love of art.”



Eddie Redmayne

“My #OMGB moment was probably shooting in Liverpool. That’s a city that I just love and find endlessly inspiring through its history but also through its architecture, and we had the most wonderful time there.”

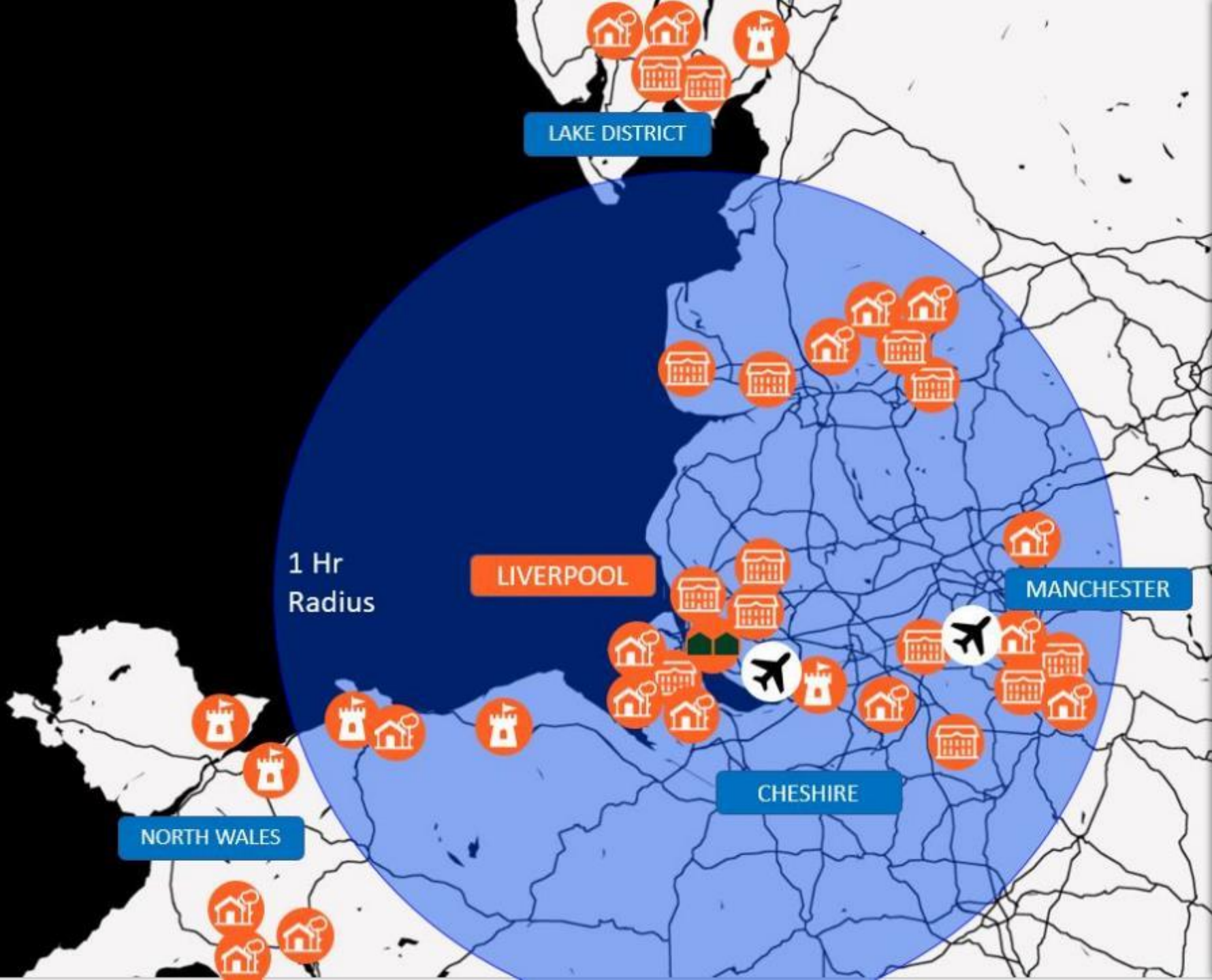
NORTH WEST ENGLAND

& NORTH WALES

You're in the heart of the 2nd largest production base in Europe, housing an abundance of key, experienced, facilities.

With an eclectic choice of locations. Including Great Ballrooms, Castles, Villages and landscapes within a 1 hour radius





STATELY HOMES, MANORS, GREAT HALLS ETC

- St George's Hall
- Liverpool Cathedral
- Croxteth Hall
- Thornton Manor
- Knowsley Hall
- Levens Hall
- Adlington Hall
- Capesthorpe Hall
- Tatton Park
- Gawthorpe Hall
- Stonyhurst College
- Blackpool Tower
- Holker Hall
- Lyme Park



CASTLES

- Peckforton Castle
- Conwy Castle
- Bodelwyddan Castle
- Beaumaris Castle
- Sizergh Castle



VILLAGES

- Port Sunlight
- Great Budworth
- Saddleworth
- Bollington
- Marple Bridge
- Hawkshead
- Downham
- Chipping
- Wycoller
- Brimstage
- Thornton Hough
- Grasmere
- Portmeirion
- Beddgelert
- Llanfrothen
- Colwyn Bay
- Gwynedd

PRODUCTION SERVICES

Second most filmed UK city.

First class suppliers within 35 miles.





LIVERPOOL
OFFICE **FILM**

film.office@liverpool.gov.uk